

COMPANY PROFILE

ABOUT ONELABEL

Name Of Company : One Label Company Limited

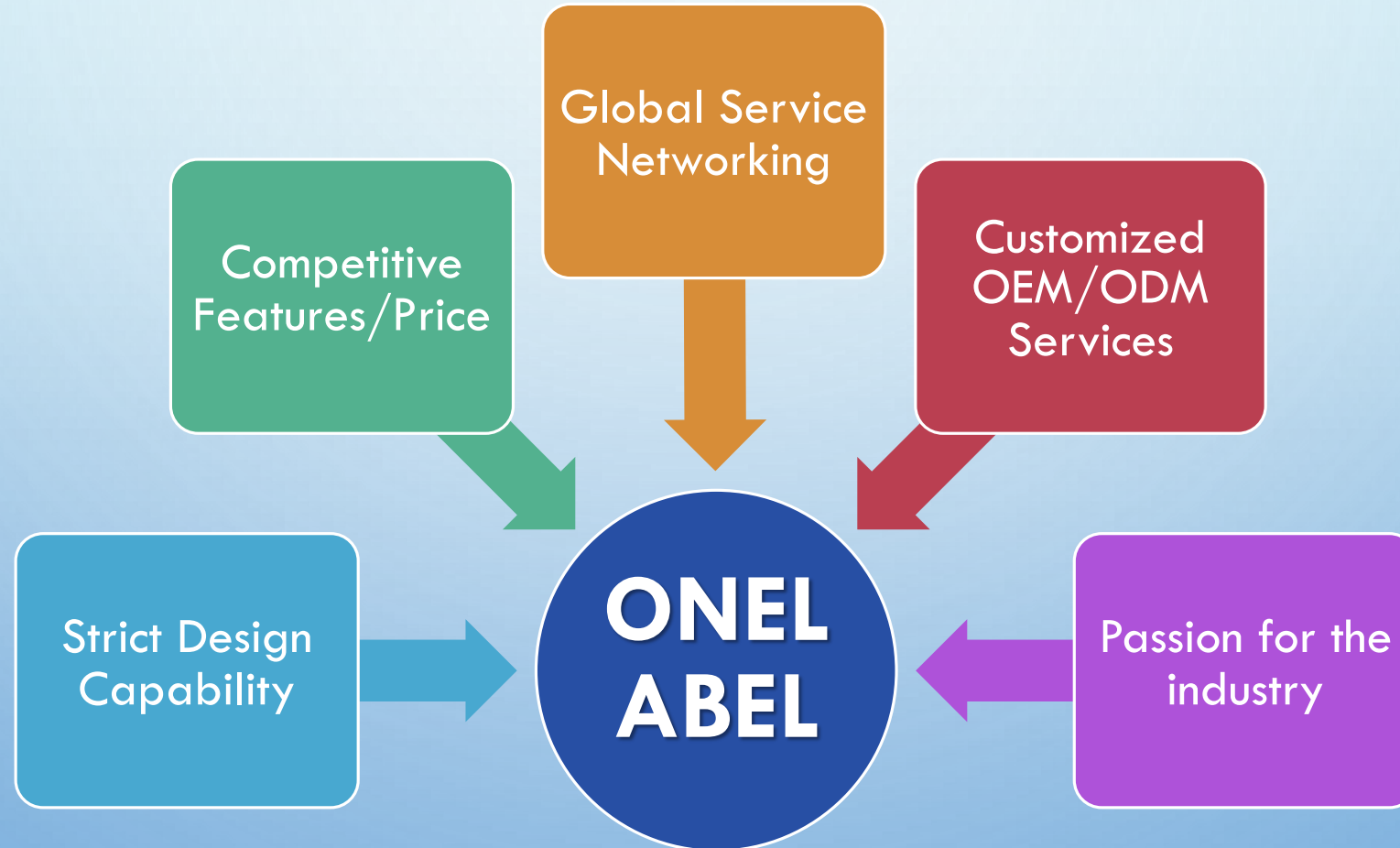
Established : Year 2011

Office and Factory : BANGKOK ,PRAWET

Main Products : Auto-ID products , POS Terminal , Mobile Terminal ,
Self-service kiosk , Smart Film and Smart Glass system ,
And Equipment



CORE VALUES



PRODUCTS AND SERVICES

- - AUTO-ID PRODUCTS – BARCODE PRINTER AND SCANNER
- - POS TERMINAL – ANDROID AND WINDOWS OS
- - MOBILE TERMINAL - RETAIL , HOSPITAL , WAREHOUSE , LOGISTIC , PRODUCTION , BANK
- - SELF-SERVICE KIOSK – INFORMATION , QUEUE , PAYMENT SYSTEM , SELF-ORDER
- - SMART FILM AND SMART GLASS SYSTEM
- - LABEL RIBBON



MAIN PRODUCTS AND SERVICES

Scanner



**Pos
Terminal**



**Label POS
Printer**



**Mobile
Computer**



Barcode Scanner 1D & 2D

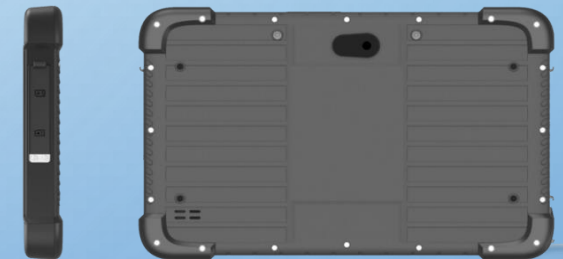


Mobile and RFID Terminal

RFID Terminal



Mobile Terminal



Thermal Printer 2" & 3"



Label and RFID Printer



Easy Bar 4E & Gprinter



Postek & RFID Printer



POS Terminal Windows & Android

Pos Windows

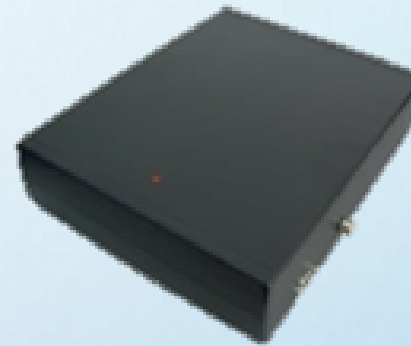


Pos Android

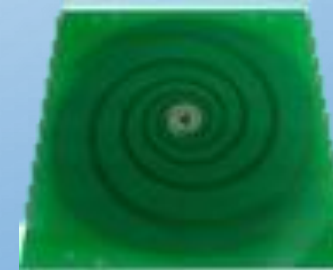


RFID & Antenna

RFID Reader



RFID Antenna



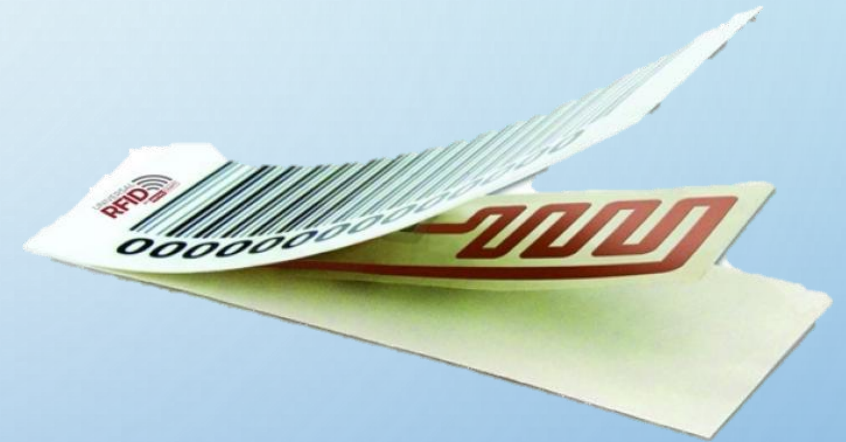
RFID Label

1. Normal RFID Label.

2. Metal RFID Label.



Item		Description	Remaks
Product		Blank Label	
Label Size		100 x 50 mm	
Antenna Size		44 x 44 mm	
Chip		Impinj monza 4QT	
Memory	EPC	128 Bits	Read & Write
	TID	96 Bits	Read Only
	User	512 Bits	Read & Write
Frequency		920 - 925 MHz	
Read Range		6 m	Depend on Readers
Operation Mode		Passsive	
Data Retention		10 Years	
Programming		100,000 cycles	
Surface Material		Coated Paper	
Delivery Format		In Roll	2500 pcs/roll



Self Service – Order & Pay - Cashless Kiosk



Slim Version 21

- **Cashless Kiosk**
- Receipt Printer
- 21.5 " Screen with CPU
- Credit / Debit
- E Wallet
- Mobile Payment
- Information Guide
- Registration
- Reservation
- Q Management

Self Service – Order & Pay - Cashless Kiosk



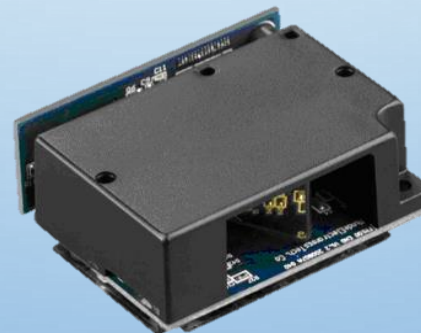
QUEUE SYSTEM DEVICES



KIOSK SCANNER

ES-4200 1D Engine

ES-4650 2D Engine



CS-800 PLUS LASER SCANNER



- Scan speed : 100 scan/sec
- Industrial grade - IP 52 standard
- 4 meters drop on Concrete floor

CS-1000 PLUS LASER SCANNER



- Scan speed : 100 scan/sec
- Industrial grade - IP 52 standard
- 4 meters drop on Concrete floor
- With Auto-scanning stand

CS-6600 2D IMAGER SCANNER



- IMAGE SIZE : 1280 X 800 PIXELS
- DECODE ALL MAJOR 1D AND 2D BAR CODES
- INDUSTRIAL GRADE – IP52 STANDARD
- 2 METERS DROP ON CONCRETE FLOOR
- STAND IS STANDARD SET

CS-5230 INDUSTRIAL LASER SCANNER



- Industrial Heavy Duty
- Singer Laser read 1D barcode
- Scan Speed : 100 Time/Sec
- 4 meters drop on concrete floor and water proof

BC-603 2D SCANNER



- IMAGE SIZE : 648 X 480 PIXELS
- DECODE ALL MAJOR 1D AND 2D BAR CODES
- 1.5 METERS DROP
- USB CABLE
- STAND IS STANDARD SET

BC-603BT 2D SCANNER BLUETOOTH WITH CRADLE



- IMAGE SIZE : 648 X 480 PIXELS
- DECODE ALL MAJOR 1D AND 2D BAR CODES
- CABLE FOR CHARGING
- CONNECT WITH USB DONGLE
- STAND IS STANDARD SET

BC-603BT40 2D SCANNER BLUETOOTH



- IMAGE SIZE : 648 X 480 PIXELS
- DECODE ALL MAJOR 1D AND 2D BAR CODES
- CABLE FOR CHARGING
- STAND IS STANDARD SET
- CONNECT DIRECT WITH TABLET

BC-603R 2D SCANNER BLUETOOTH WITH CRADLE



- IMAGE SIZE : 648 X 480 PIXELS
- DECODE ALL MAJOR 1D AND 2D BAR CODES
- CRADLE FOR CONNECT AND CHARGING
- CONNECT 2 MODE BY CRADLE AND DIRECT WITH TABLET
- CRADLE IS STANDARD SET

CS-8120 2D COUNTER IMAGER SCANNER



- Image size : 1280 x 800 pixels
- Decode all major 1D and 2D bar codes
- Faster read speed as compare Laser
- Small and compact size

CS-8220 2D COUNTER IMAGER SCANNER



- Image size : 640x 480 pixels
- Decode all major 1D and 2D bar codes
- Faster read speed as compare Laser
- Small and compact size

CS-8600 COUNTER SCANNER



- Auto-Scanning Mode
- Scan Mode : 2D Imager
- Image Size : 1028 x 1024 Pixel
- Read 1D Barcode On Phone

CS-168 COUNTER SCANNER



- Auto-Scanning Mode
- Scan Mode : 2D Imager
- Image Size : 640 x 480 Pixel
- Read 1D & 2D Barcode On Phone
- 1.5 meters drop on concrete floor

CS-3290 1D & CS-3290 2D CORDLESS SCANNER



- AUTO-SCANNING MODE
- DECODE RATE : LASER – 200 TIME/SEC
- DECODE RATE : 2D –838 X 640 PIXEL
- RUNS ON RF433 TECHNOLOGY
- 160,000 SCANNING TIMES AFTER FULL CHARGE
- COVERAGE : 200 METERS IN OPEN AREA
- INDUSTRIAL GRADE – IP 50 STANDARD
- 1.5 METERS DROP PROOF ON CONCRETE FLOOR
- BATTERY : 1400MAH 20 - 40 HOURS OPERATION TIME
- WITH CRADLE UNIT

CS-2190 1D & CS-2290 2D CORDLESS SCANNER



- AUTO-SCANNING MODE
- DECODE RATE : LASER – 200 TIME/SEC
- DECODE RATE : 2D – 1 280 X 800 PIXEL
- COVERAGE : 100 METERS IN OPEN AREA
- RUNS ON RF433 TECHNOLOGY
- BATTERY : 1 400MAH 20 - 40 HOURS OPERATION TIME
- INDUSTRIAL GRADE – IP 51 STANDARD
- 1.5 METERS DROP PROOF ON CONCRETE FLOOR

CR-30 1D & 2D RING SCANNER BLUETOOTH



- Decode Rate : Laser – 100 Scan/Sec
- Decode Rate : 2D Imager – 1280 x 800 Pixel
- 2.4Ghz ; Bluetooth 4.0
- Coverage : 30 meters
- Battery : 380mAh 5- 6 hours operation time
- 1.2 meters drop on concrete floor

CS-3690 1D & 2D BLUETOOTH/WIFI SCANNER



- Decode Rate : Laser – 100 Scan/Sec
- Decode Rate : 2D Imager – 1280 x 800 Pixel
- 2.4Ghz ; Bluetooth 4.0 - 30 meters Coverage
- 2.4Ghz ; 802.11 b/n/g - 100 meters Coverage
- Battery : 1900mAh 10 - 20 hours operation time
- Data Storage : 4-76MB (Depends on scan mode)
- 1.2 meters drop on concrete floor

IDATA50 ANDROID MOBILE COMPUTER



- Display : 4.7"
- 1D , 2D Engine
- CPU : Quad-Core 1.3 GHz
- Memory : 16GB ROM 2GB SDRAM
- Battery : 3600 mAh
- Interface : USB
- OS : Android 6.0
- Support : Wifi , Bluetooth , 3G/4G , GPS

IDATA50P ANDROID MOBILE COMPUTER



- Display : 4.7"
- 1D , 2D Engine
- CPU : Quad-Core 2.0 GHz
- Memory : 16GB ROM 2GB SDRAM
- Battery : 3600 mAh
- Interface : USB
- OS : Android 9.0
- Support : Wifi , Bluetooth , 3G/4G , GPS

IDATA50UHF RFID ANDROID MOBILE READER



- Display : 4.7"
- 1D , 2D Engine
- CPU : Quad-Core 2.0 GHz
- Memory : 16GB ROM 2GB SDRAM
- Battery : 3600 mAh
- Interface : USB
- OS : Android 9.0
- Support : Wifi , Bluetooth , 3G/4G , GPS
- RFID reader with gun scan

IDATA95W ANDROID MOBILE COMPUTER



- Display : 3.5"
- CPU : Quad-Core 1.3 GHz
- Memory : 8GB Flash ROM 1GB SDRAM
- Battery : 4000 mAh
- Interface : Mini USB
- OS : Android 6.0
- Support : Wifi , Bluetooth , 3G/4G , GPS

IDATA 70 ANDROID MOBILE COMPUTER



- Display : 4" HVGA (800x480)
HD LCD Capacitive Touch Screen
- CPU : Quad-Core 1.3 GHz
- Memory : 1GB RAM + 8GB ROM
2GB RAM + 16GB ROM
- Battery : 3.8V , 5000 mAh
- OS : Android 6.0 , Android 10
- Camera : 8MP
- Keypad : 21 front keys , 4 side keys
- Support : Wifi , Bluetooth 4.0 , 3G/4G , GPS

HP-M200/M300 MOBILE BLUETOOTH PRINTER



- DIRECT THERMAL TRANSFER
- PRINT WIDTH : **M200** 58MM , **M300** 76MM
- PRINT SPEED : **M200** 80MM/SEC , **M300** 90MM/SEC
- PAPER DIAMETER : 45MM
- INTERFACE : USB + BLUETOOTH
- SUPPORT : WINDOWS + ANDROID
- BATTERY : **M200** 1500 MAH , 7.4V
M300 2000 MAH , 7.4V

HP-M200E/300E MOBILE BLUETOOTH/WIFI PRINTER



- DIRECT THERMAL TRANSFER
- PRINT WIDTH : **M200E** 58MM , **M300E** 80MM
- PRINT SPEED : 60MM/SEC
- PAPER DIAMETER : 50MM
- INTERFACE : USB + BLUETOOTH / USB + WIFI
- SUPPORT : WINDOWS + ANDROID + IOS
- BATTERY : **M200E** 1800 MAH
M300E 2000 MAH

HP-262 MOBILE BLUETOOTH



- DIRECT THERMAL TRANSFER
- PRINT WIDTH : 48MM
- PRINT SPEED : 60MM/SEC
- PAPER DIAMETER : 30MM
- INTERFACE : USB + BLUETOOTH
- SUPPORT : WINDOWS + ANDROID + IOS
- BATTERY : 1000 MAH

HP-380 MOBILE BLUETOOTH / WIFI



- Direct Thermal Transfer
- Print Width : 78mm
- Print Speed : 80mm/sec (Receipt Mode) , 50mm (Label Mode)
- Support TSPL , CPCL , ESC/POS
- Interface : USB + Bluetooth / USB + WIFI
- Support : Windows + Android + IOS

TP-58NII THERMAL RECEIPT PRINTER



- Print Method: Line Thermal Printing
- Printing width : 58mm
- Printing speed : 70mm/sec
- Interface : USB
- Reliability : 100KM

TP-3260VL THERMAL RECEIPT PRINTER



- PRINT METHOD: LINE THERMAL PRINTING
- PRINTING WIDTH : 80MM
- PRINTING SPEED : 250MM/SEC
- INTERFACE : RS232 + USB + LAN
- RELIABILITY : 100KM
- CAN PRINT 2D QR CODE

TP-3300 THERMAL RECEIPT PRINTER



- PRINT METHOD: LINE THERMAL PRINTING
- PRINTING WIDTH : 80MM
- PRINTING SPEED : 300MM/SEC
- INTERFACE : RS232 + USB + LAN
- RELIABILITY : 100KM
- CAN PRINT 2D QR CODE

TP-3300II THERMAL RECEIPT PRINTER



- Print Method: Line Thermal Printing
- Printing width : 80mm
- Printing speed : 300mm/sec
- Interface : RS232 + USB + LAN
- Reliability : 100KM
- Can print 2D QR Code

TP-300K KITCHEN THERMAL RECEIPT PRINTER



- PRINT METHOD: LINE THERMAL PRINTING
- PRINTING WIDTH : 80MM
- PRINTING SPEED : 300MM/SEC
- INTERFACE : RS232 + USB + LAN
- RELIABILITY : 150KM
- CAN PRINT 2D QR CODE
- LED LIGHT
- SOUND ALERT
- ADAPTER INSIDE

TP-3250IIL THERMAL RECEIPT PRINTER



- PRINT METHOD: LINE THERMAL PRINTING
- PRINTING WIDTH : 80MM
- PRINTING SPEED : 250MM/SEC
- INTERFACE : USB + RS232 + LAN
- RELIABILITY : 100KM

PL-330 THERMAL RECEIPT PRINTER



- PRINT METHOD: DIRECT THERMAL
- PRINTING WIDTH : 79.5+/-0.5MM
- PRINTING SPEED : 300MM/SEC
- INTERFACE : USB + RS232 + LAN
- OPTIONAL : BLUETOOTH/WIFI/LPT
- BARCODE : 1D + 2D
- PRINthead : 150KM
- CERAMIC CUTTER : 1,500,000 CUT

GP-1424D LABEL PRINTER



- PRINT METHOD: DIRECT THERMAL
- RESOLUTION : 203 DPI
- PRINTING SPEED : 2-8 IPS
- INTERFACE : USB
- MEMORY : 4MB FLASH ROM , 8MB SDRAM
- PRINTHEAD : 50KM

POSTEK G2000/3000 LABEL PRINTER



- PRINT METHOD: DIRECT THERMAL & THERMAL TRANSFER
- RESOLUTION : 203 DPI (G2000)/ 300 DPI (G3000)
- PRINTING SPEED : 6 IPS
- INTERFACE : RS-232 SERIAL, 10/100 M-BIT ETHERNET,
- USB DEVICE 2.0, USB HOST, CENTRONICS PARALLEL (OPTIONAL)
- MEMORY : 8MB FLASH ROM , 16MB SDRAM
- RIBBON : WAX , WAX/RESIN ,RESIN

POSTEK I200/I300 INDUSTRIAL LABEL PRINTER



- PRINT METHOD: DIRECT THERMAL & THERMAL TRANSFER
- RESOLUTION : 203 DPI (I200)/ 300 DPI (I300)
- PRINTING SPEED : 6 IPS
- INTERFACE : RS-232 SERIAL, 10/100 M-BIT ETHERNET, USB DEVICE 2.0, USB HOST, CENTRONICS PARALLEL (OPTIONAL)
- MEMORY : 8MB FLASH ROM , 16MB SDRAM
- RIBBON : WAX , WAX/RESIN ,RESIN

POSTEK C-168 LABEL PRINTER



- PRINT METHOD: DIRECT THERMAL & THERMAL TRANSFER
- RESOLUTION : 203 DPI
- PRINTING SPEED : 4 IPS
- INTERFACE : RS-232 SERIAL, USB DEVICE 2.0,
10/100 M-BIT ETHERNET (OPTIONAL) ,CENTRONICS PARALLEL (OPTIONAL)
- MEMORY : 8MB FLASH ROM , 16MB SDRAM
- RIBBON : WAX , WAX/RESIN ,RESIN

TCP-M156 POS TERMINAL



- INTEL CELERON J1900 QUAD CORE 2.0GHZ
- 4/8GB DDR3 RAM
- 128/256GB SSD HDD
- 15" MONITOR
- OPTION : MSR , VFD , SECOND MONITOR
10.1", 1 15.6"

TCP-1510 POS TERMINAL



- INTEL CELERON J1900 QUAD CORE 2.0GHZ
- 4/8GB DDR3 RAM
- 128/256/512GB SSD
- 15" MONITOR
- OPTION : VFD , SECOND MONITOR 9.7",15."

TCP-I500L POS TERMINAL



- INTEL CELERON J1900 QUAD CORE 2.0GHZ
- INTEL CORE I5 5200 2.2GHZ
- WINDOWS 7/8/10
- 4/8GB DDR3 RAM (MAX : 8)
- 64/128GB SSD OR 500GB SATA HDD
- 15" CAPACITIVE TOUCH SCREEN
- OPTION: MSR, WIFI , SECOND MONITOR, VFD

TCP-9015N POS TERMINAL



- Intel Celeron J1900 Quad Core 2.0Ghz
- Intel Core i3 6100U 2.3Ghz
- Intel Core i5 7200U 2.3Ghz
- 4/8GB DDR3 RAM
- 256/512GB SSD HDD
- 15" TFT Capacitive touch screen
- Option : MSR , Second Monitor 8.4", VFD

TCP-1010 POS TERMINAL



- INTEL CELERON J1900 QUAD CORE
2.0GHZ
- 4/8GB DDR3 RAM
- 128/256GB SSD
- 10" MONITOR
- OPTION : VFD

TCP-M60 ANDROID POS TERMINAL



- ALL IN ONE
- ANDROID 7.1 , 9.1
- MEMORY : 2GB RAM + 16GB ROM (ANDROID 7.1)
4GB RAM + 64GB ROM (ANDROID 9.1)
- 80MM THERMAL PRINTER AUTO CUTTER
- 15.6" CAPACITIVE TOUCH
- WIFIF , BLUETOOTH
- OPTION : SECOND MONITOR 11.6 , 15.6

TCP-A9210 ANDROID POS TERMINAL



- ALL IN ONE , 2" THERMAL PRINTER
- 11.6" TOUCH SCREEN
- ANDROID 6.0 OS, CORTEX-A53 64BIT 8 CORE
- 2GB RAM
- 8GB FLASH STORAGE
- 4.3" LED/LCD DISPLAY (OPTIONAL)
- WIFI, BLUETOOTH

EC-410 CASH DRAWER



- Standard-Duty, Speedy and Reliable cash drawer
- Metal cash drawer with heavy-duty ball bearing rollers
- Two media slots
- Removable bill and coin case
- 5 bill and 8 coin tray
- 12V or 24V for RJ11 receipt printer interface
- 3 positions keylock
- Interface : RJ11 / RS232 /USB
- Durability : 1,000,000 operations

Customer Site



เจียง ลุกซันปลา





087-561-9006, 098-919-8911



wannachai@onelabel.co.th





THANK YOU